



KNIGHT-HENNESSY
SCHOLARS PROGRAM



Mission

To prepare leaders to address global challenges in the 21st century and beyond

“We seek scholars who want to make their contributions to the world.”

– John L. Hennessy



Knight-Hennessy Scholars
Stanford University

Fully Funded Graduate Education

- Largest fully endowed program in the world
- 100 scholars each year, after the inaugural 50-person class
- **More than 80% of the endowment directly supports the scholars**
- Graduate and professional programs, including PhD, JD, MBA, MS, MA and MD programs
- Encourage interdisciplinary study
- Up to 3 years of funding, including tuition and living expenses
 - *For degree programs more than 3 years, guaranteed funding through the schools or programs*

Value Added

- We add value in 3 ways:
 1. *Selection*
 2. *Leadership education*
 3. *Community building and cultural exchange*

Curriculum

- In addition to their graduate programs, they'll be exposed to the King Global Leadership Program, which entails:
 - *Leadership training and development*
 - *Focus on multidisciplinary thinking*
 - *Global perspectives*
 - *Large-scale problem solving*
- Programming might include:
 - *Special access speaker events*
 - *Scholar-led lunchtime discussions*
 - *Various cultural activities*
 - *Off-campus excursions*

Admissions Eligibility

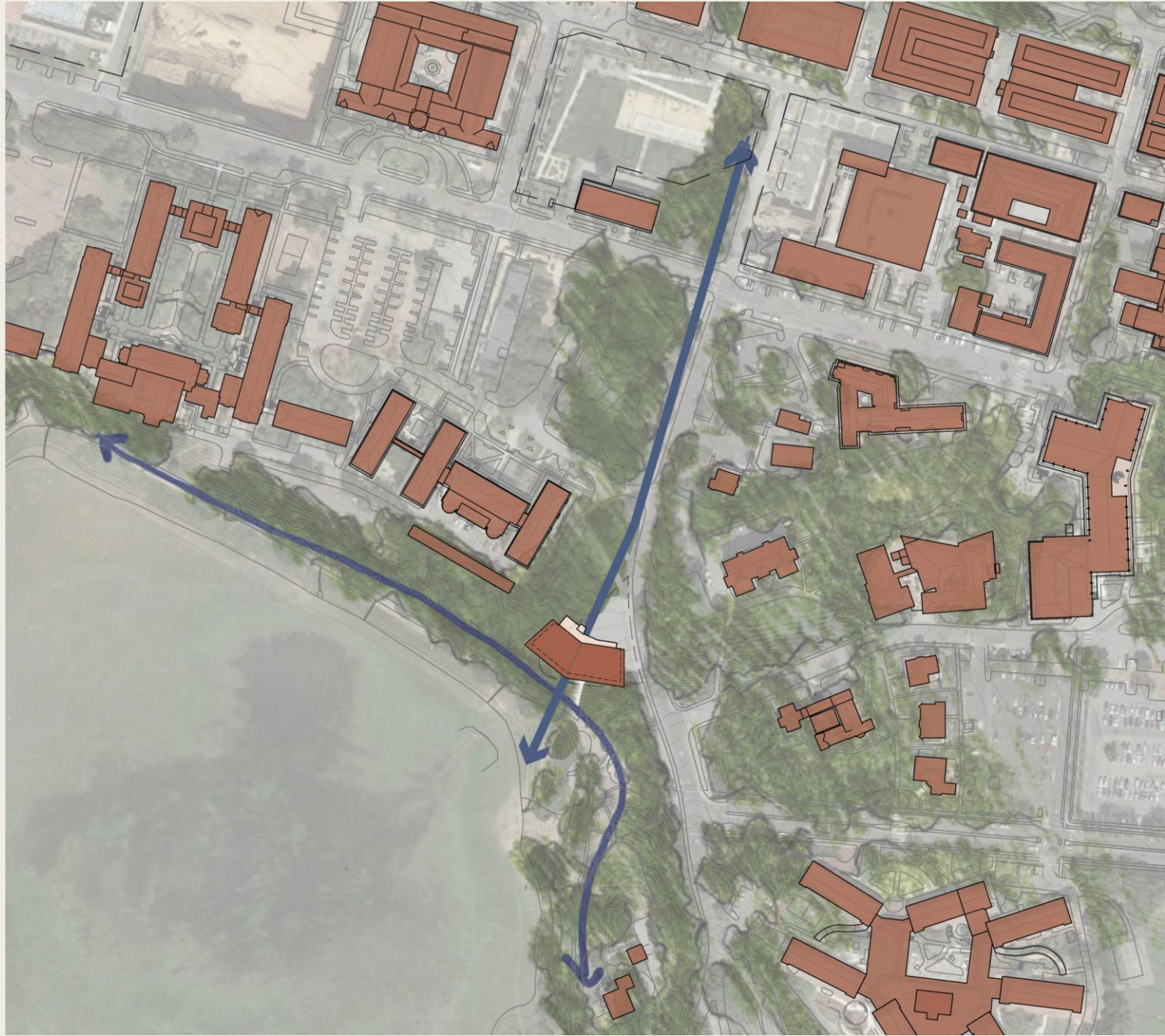
- Students must matriculate within five years of receiving their undergraduate degree
- Can have other graduate degrees
- Must apply separately to the Stanford graduate program
- Preference to students who want to do a 2-year program or longer
- No geographic restrictions, seeking a global class

Admissions Timeline

- Summer 2017: Application open
- Fall 2017: Applicants to the inaugural class apply to the Stanford grad program
- Fall 2018: Inaugural class of 50 arrives
- Fall 2019: Program will enroll 100 students each year, with up to 300 in residency at any one time

Advisory Boards

- Faculty Board
- External Advisory Board



Denning House

- Site is next to Roble along Lomita Mall, with most windows facing Lake Lagunita
- Design finalized by the end of July
- Approval meetings in the fall and winter
- Occupancy begins in September 2018
- Will be used for dining space, classroom, study area, and administrative offices
- Not residential housing
- Scholars will live in regular graduate housing

Administration

- Shriram Family Director and Co-founder: John L. Hennessy
- Executive Director: Jeff Wachtel
- Dean of Admission: Derrick Bolton
- Managing Director: Alyssa Morrison
- Senior Department Administrator: Celeste Browne
- Additional staff to be finalized in the fall